



*Our Lady of the Assumption
Catholic Primary School*



Safeguarding and Child Protection Policy

Approved by Full Governing Body : 6th December 2017

Signed

Chair of Governors .

To be reviewed : September 2018, or dependant on any legislative changes

Safeguarding Statement :

'Our Lady of the Assumption Catholic Primary School is committed to safeguarding and promoting the safety and welfare of all children and expects all staff , parents and volunteers to share this commitment.'

Culture of Vigilance – At Our Lady of the Assumption we promote a culture of vigilance . We keep our eyes open, our ears open and we think the unthinkable.

Date of Review: November 2017

Reviewed by: Kate Connelly (DSL)

Agreed by Governors: 6th December 2017

Shared with all Staff: Signed for by staff January 2018.

Frequency of Review: Annually

Date of Next Review: September 2018

Designated Lead Person for Child Protection: Kate Connelly, Headteacher . Tel 02476466655

**Deputy Designated Lead Person for Child Protection: Lorraine Stanton, Deputy Headteacher.
Tel 02476 466655**

Additional DSL – Geraldine Lucas Tel 02476 466655

Named Governor for Safeguarding & Child Protection: Tony Kiely – Chair of Governors Tel - 07527162993 or 02476332177

LAC Designated Person: Geraldine Lucas – Pastoral Manager Tel. 02476 466655

E-Safety Lead: Kate Connelly, Headteacher . Tel 02476466655

Local Authority Designated Officer (DO), for allegations against staff:

Mona Cook at LADO@coventry.gcsx.gov.uk

Tel: 024 7683 1730 (direct line)

Online referral form: <http://www.coventry.gov.uk/ladoreferral>

Chair of Governors: Tony Kiely

Vice-Chair of Governors: Lucy Dyde

MASH TEAM: Telephone: 024 7678 8555

PREVENT Officer: Geoff Thomas (Geoffthomas@coventry.gov.uk)

POLICE: 101 ext 7939

SCHOOL NURSE SERVICE: Mandy Coombes Tel. 02476 472982

HEALTH VISITOR: For our Nursery children – 02476 472990

CAMHS: 02476 961368

CONTENTS

1. Purpose and Aims
2. Statutory Framework
3. The Role of the Governing Body
4. The Role of the Headteacher
5. The Role of the Designated Safeguarding Lead
6. The Roles & Responsibilities of all Staff within School
7. Safeguarding Training
8. Promoting the Well-Being of Children and young People
9. Dealing with concerns or disclosures regarding a child or young person

(including protocol for staff when there are allegations or incidents of abuse; includes a requirement for all verbal notifications to the designated person for safeguarding to be confirmed by dated written communication)

10. Confidentiality
11. Communication with Parents
12. Record Keeping
13. Safer Recruitment
14. Dealing with Concerns regarding School Staff/Volunteers
15. Special Circumstances
16. Additional school policies to support Safeguarding and Child Protection within Our Lady of the Assumption

Appendices:

- Appendix 1: Part One of Keeping Children Safe in Education (DfE 2016)
- Appendix 2: Role of the Designated Safeguarding Lead
- Appendix 3: Signs and symptoms of abuse
- Appendix 4: Indicators of abuse
- Appendix 5: Referral guidance
- Appendix 6: CP Report Pro Forma
- Appendix 7: OLA security arrangements from September 2016
- Appendix 8: Professional Abuse Flow Chart

1 Purpose and Aims

- 1.1 Our Lady of the Assumption Catholic Primary School fully recognises its responsibilities for safeguarding children (child protection).
- 1.2 Our policy applies to all staff, volunteers, governors and visitors in the school.
- 1.3 There are five main elements to our policy:
 - Ensuring we practice safe recruitment in line with national legislation by using at least one suitably trained recruiter on all interview panels and by checking the suitability of staff and volunteers to work with children and ensuring any unsuitable behaviour is reported and managed using the Allegations Management procedures
 - Raising awareness of child protection issues and equipping children with the skills needed to keep them safe
 - Developing and then implementing procedures for identifying and reporting cases, or suspected cases, of abuse
 - Supporting pupils who have been abused, in accordance with his/her agreed child protection plan **or their CIN plan**
 - Establishing a safe environment in which children can learn and develop.
- 1.4 We recognise that because of the day to day contact with children, school staff are well placed to observe the outward signs of abuse. The school will therefore:
 - Establish and maintain an environment where children feel secure, are encouraged to talk, and are listened to
 - Ensure children know that there are adults in the school whom they can approach if they are worried
 - Include opportunities across the curriculum for children to develop the skills they need to recognise and stay safe from abuse.
 - We recognise that our school community has specific issues relating to domestic violence, drug and alcohol misuse and social and political extremism in all of its forms and therefore our policy and practice reflect this.

2 Statutory Framework

- 2.1 In order to safeguard and promote the welfare of children, we will act in accordance with the following legislation and statutory guidance:

- The Children Act 1989 & 2004
- The Education Act 2002 (Section 175 for Maintained Schools, Section 157 for Independent Schools, Academies and Free Schools.)
- The Education (Pupil Information) (England) Regulations 2005
- Dealing with Allegations of Abuse Against Teachers and Other Staff (DfE, 2011)
- Working Together to Safeguard Children (DfE 2015)
- Keeping Children Safe in Education (DfE 2016), which is available at www.gov.uk/government/uploads/system/uploads/attachment_data/file/526153/Keeping_children_safe_in_education_guidance_from_5_September_2016.pdf - emailed to all staff 16/9/16
- Procedures set out by the Coventry Safeguarding Children Board.

3 The Role of the Governing Body

- 3.1 Part 2 of Keeping Children Safe in Education (DfE, 2016) sets out the responsibilities of governing bodies. As part of these overarching responsibilities the Governing Body will:
- 3.1.1 Through the Headteacher, remedy without delay any deficiencies or weaknesses in regard to child protection arrangements that are brought to the attention of the school management or Governing Body
 - 3.1.2 Ensure that a senior member of staff of the school's leadership team is identified to take the role of Designated Safeguarding Lead as defined in *Keeping Children Safe in Education*, and given in Appendix 1 of this document. A second member of staff, the Deputy Designated Safeguarding Lead, will fulfil this role when the DSL is unavailable.
 - 3.1.3 Ensure that the school has a nominated governor responsible for child protection, to take lead responsibility in the Governing Body for Safeguarding and Child Protection, and to provide support and challenge to the DSL to ensure that the work of the school conforms to this policy.
 - 3.1.4 Ensure that on arrival at school all visitors (including contractors) are provided with a leaflet making them aware of their responsibilities in being alert to the signs of abuse and their responsibility for referring any concerns to the Designated Safeguarding Lead or his/her Deputy, and the names of the Designated Safeguarding Leads and his/her Deputy.
 - 3.1.5 Make this policy available to parents and carers through the school website and ensure that parents have an understanding of the responsibility placed on the school and staff for child protection by setting out its obligations in the school prospectus.
 - 3.1.6 Ensure that children and young people are taught about keeping themselves safe, in a way that is appropriate to their age. This will include raising their awareness of the types of abuse and neglect, and specific safeguarding issues (eg Child Sexual Exploitation), set out in Appendix 1. Our Lady's promotes 'Protective Behaviours' in school – all staff have been trained and the programme is delivered across all year groups.

- 3.1.7 Ensure that the school contributes to inter-agency working in line with statutory guidance *Working Together to Safeguard Children* (DfE 2015). This includes providing a co-ordinated offer of early help¹ when additional needs of children are identified and contributing to inter-agency plans to provide additional support to children subject to child protection plans. This covers a range of work such as:
- Working with the named CAF Co-ordinator in Children & Family First regarding resistant families
 - Working to help identify children and young people who are privately fostered
 - Working with the Child Sexual Exploitation (CSE) Team
 - Working to help protect children from extremist and violent views through multi-agency work on the PREVENT agenda.
- 3.1.8 Ensure that the school develops effective links with relevant agencies and co-operate as required with their enquiries regarding child protection matters, including:
- Attendance at case conferences
 - Notifying Social Care immediately (on the first day of absence) if there is an unexplained absence of a child on a **Child Protection Plan**
 - Contacting the child's social worker directly if there is an unexplained absence of a child who is **Looked After**. This will then trigger actions identified in the 'Joint Police and Social Care Protocol for Dealing with Children Missing from Care'.
- 3.1.9 Ensure that the school's Child Protection procedures are in accordance with Local Authority guidance and inter-agency procedures agreed through the Coventry Safeguarding Children Board.
- 3.1.10 Ensure there is a staff behaviour (code of conduct) policy, which links to this Safeguarding and Child Protection Policy, and which is shared with all current staff and forms part of the induction training for new staff.
- 3.1.11 Ensure that² any member of staff found not suitable to work with children will be notified to the Disclosure and Barring Service (DBS) for consideration for barring, following resignation, dismissal or when we cease to use their service as a result of a substantiated allegation, in the case of a volunteer³.
- 3.1.12 Review this Safeguarding and Child Protection Policy, and its effectiveness, annually (no later than the date of next review given on the front cover).

4. The Role of the Headteacher

- 4.1 The Headteacher, as Designated Safeguarding Lead, must ensure that this policy and associated procedures are followed by all staff.

¹ Inspected by Ofsted under leadership and management of safeguarding (Inspecting Safeguarding, Ofsted, April 2014. Paragraph 17)

² Following guidance from the LADO

³ Working Together to Safeguard Children (DfE 2015) states "If an organisation removes an individual (paid worker or unpaid volunteer) from work such as looking after children (or would have, had the person not left first) because the person poses a risk of harm to children, the organisation must make a referral to the Disclosure and Barring Service. It is an offence to fail to make a referral without good reason."

- 4.2 Ensure that the school is alert to possible private fostering arrangements, and that in the school admission process, the parents/carers resident with each child or young person indicate whether they are parent, other relative (to be specified), friend of the family, or other (to be specified).
- 4.3 Ensure that the Protective Behaviours programme is delivered across the whole school.

5. The Role of the Safeguarding Lead

- 5.1 The broad areas of responsibility of the Designated Safeguarding Lead involve managing referrals/cases and raising awareness of safeguarding and child protection amongst staff. Appendix 2 of this document, drawn from *Keeping Children Safe in Education 2016*, provides more detailed information on these areas of responsibility.
- 5.2 The Designated Safeguarding Lead will have the status and authority within the school to carry out the duties of the post including committing resources and, where appropriate, supporting and directing other staff.
- 5.3 In making decisions on whether to refer child protection concerns/disclosures to Children's Social Care the Designated Safeguarding Lead must use Coventry's Children's Social Care Thresholds and Practice Standards, available at: <http://coventryscb.proceduresonline.com/> The DSL will consult with the Referral and Assessment Service if still unsure on whether to refer.
- 5.4 Check the school's Impero IT Management system every month to look for banned word searches by staff or pupils. Staff and pupils have to 'accept' conditions of use every time they log into the school's network. If they do not 'accept' the conditions then they cannot log in. The children had an assembly in September 2017 delivered by our IT technician on what the Impero software looks for and how pupil searches can be logged and investigated.
- 5.5 Organise home visits to vulnerable families where necessary.

6. The Role & Responsibilities of all Staff within School

- 6.1 All staff and volunteers must read this policy and Part One of *Keeping Children Safe in Education* (Appendix 1) and ensure they are aware of their responsibilities for safeguarding and child protection in being alert to the signs of abuse and of their responsibility to report and record any concerns or disclosures.
- 6.2 All staff and volunteers must act in accordance with this policy if a child he/she presents with indicators of abuse (see Appendix 1 for details). Procedures for reporting concerns are given in sections 5 and procedures for dealing with a disclosure are given in section 6 of this document.
- 6.3 All staff need to be extra vigilant to children and families being subject to specific areas of abuse which we know affect our school community e.g domestic violence, drug and alcohol misuse and social and political extremism in all of its forms.
- 6.4 Teachers are responsible for ensuring that the Protective Behaviours programme is delivered to their class each year.

6.5 If concerns or allegations regarding a member of staff or the Headteacher then the processes outlined in **section 14** of this document must be followed.

7 Safeguarding Training

7.1 The Headteacher must undertake training on child protection at least once every three years (statutory requirement), at LSCB level 1 or above. If the Headteacher is the Designated Safeguarding Lead then he/she shall meet the training requirements set out in 7.2 below.

7.2 In addition to basic child protection training the Designated Safeguarding Lead must attend the LSCB's Level 2 *Working Together to Safeguard Children* training, and then undertake DSL refresher safeguarding training at least annually.

7.3 or LSCB Level 3 at least every two years (statutory requirement).

7.4 The Deputy Designated Safeguarding Lead and the Additional DSL must meet the training requirements in section 7.2.

7.5 Any newly appointed Designated Safeguarding Lead must attend the LSCB's Level 2 *Working Together to Safeguard Children* training before taking lead responsibility for safeguarding. The deputy Designated Safeguarding Lead will take a leading role on safeguarding for the short time that the Designated Safeguarding Lead is waiting to receive training.

7.6 All other staff, who work with children, will undertake safeguarding and child protection training at Level 1 (this should be carried out by the Designated Safeguarding Lead in School) to equip them to carry out their responsibilities for child protection effectively. Greater emphasis during this training is given to the specific areas which we know affect our school community e.g domestic violence, drug and alcohol misuse and social and political extremism in all of its forms. This must be kept up to date by refresher training at three yearly intervals, and temporary staff and volunteers who work with children must be made aware of the school's arrangements for child protection and their responsibilities.

7.7 All new members of staff will receive child protection training as indicated in 7.6 above as part of their induction programme

7.8 Briefings and updates on child protection and safeguarding procedures (including the signs of abuse and procedures for reporting concerns and disclosures) will be provided on a regular basis, at least annually, but more frequently when necessary, to ensure that all members of staff are familiar with any changes to the school policy as they occur

7.9 All staff at Our Lady's received Protective Behaviours training in May 2016 and are therefore aware of 'We all have the right to feel safe all the time'

7.10 At least one member of every appointments panel will have gained accreditation through Safer Recruitment training. The school will ensure that there are always sufficient numbers of suitably trained staff or governors in post.

8 Promoting Children and Young People's Well-being

8.1 The school will teach children about safeguarding and ensure that the school contributes to inter-agency working in line with statutory guidance *Working Together to Safeguard*

Children (DfE 2015). This includes providing a co-ordinated offer of early help⁴ when additional needs of children are identified and contributing to inter-agency plans to provide additional support to children subject to child protection plans.

- 8.2 The model sets out a single assessment, planning and review pathway for all children and young people, ensuring that needs are identified earlier and addressed on a multi-agency basis, the Common Assessment Framework (CAF)
- 8.3 Child Protection procedures shall be seen within the context of this broader framework as a response when there is a perceived need to protect a child or young person who is at risk of significant harm

9 Dealing with concerns or disclosures regarding a child or young person

- 9.1 All staff and volunteers must be aware that the main categories of abuse are:
- Physical abuse
 - Emotional abuse
 - Sexual abuse
 - Neglect

These categories are described in more detail in Appendix 3 and signs indicating the possibility of abuse are described in Appendix 4. The abuse may be instigated by one or more adults, and/or other children and young people.

- 9.2 If any member of staff has a concern that a child in their care has suffered any of these forms of abuse, they must report their concerns to, and seek advice from the Designated Safeguarding Lead, or in his/her absence, the Deputy Designated Safeguarding Lead, or the Additional DSL as soon as possible, and never later than the end of the working day. If there is concern as to whether it is safe to allow the child to go home that day, then all effort must be made to inform the designated safeguarding lead immediately so that the Referral and Assessment Service can be informed and the necessary protective measures implemented.
- 9.3 A child may disclose sensitive information at any time of the day, and in particular this may occur outside of normal lesson time, e.g. break periods or during before/after school club sessions. It is therefore imperative that **all** the staff is aware of the signs and behaviour which **may** indicate abuse, as noted in 9.1.
- 9.4 All staff must:
- Recognise that a disclosure may come directly from the child, or from a third party, e.g. friend, neighbour, other family member. Alternatively, it may be through the

⁴ Inspected by Ofsted under leadership and management of safeguarding (Inspecting Safeguarding, Ofsted, April 2014. Paragraph 17)

suspicion of staff based on a variety of symptoms and knowledge of possible indicators of abuse

- Take seriously any disclosures made to them and provide reassurance to the discloser through their responses and behaviour.

9.5 When receiving a disclosure from a child that he/she has been abused in some way the member of staff must:

- Find time and, if necessary, a suitable place to listen to the child, when information about possible abuse comes to light.
- Listen to what is being said without displaying shock or disbelief.
- Not make false promises which may not be able to be fulfilled and do not promise confidentiality. If the child asks that information is kept secret, it is important that you tell the child in a manner appropriate to the child's age/stage in development that you cannot promise complete confidentiality – instead you must explain that you may need to pass information to other professionals to help keep the child, or other children, safe.
- Allow the child to talk freely. Do not cross examine, interview, probe or ask to see any injury that is not visible. Listen, only asking questions when necessary to clarify.
- Not criticise the alleged perpetrator.
- Reassure the child that what has happened is not his or her fault.
- Stress that it was the right thing to tell.
- Explain what has to be done next and who has to be told.
- Find out just enough to be sure of the need to refer, and keep any questions open rather than closed. Education is a referrer, not an investigative agency for child protection matters. An incident may eventually end up as a court case and children's evidence can all too easily be compromised by leading questions or repeated recital.
- Make records that are factual, accurate and relevant and avoid subjective judgements. It is not the school's responsibility to 'check out' what any child tells nor should any abuser be questioned.
- Record the disclosure on CPOMS – this will provide a dated and 'signed' record.

9.6 The member of staff who has the concern or received the disclosure must report the concern/disclosure to the Designated Safeguarding Lead, or in his/her absence, the Deputy Designated Safeguarding Lead, immediately.

- 9.7 The same approach to receiving a disclosure must be taken if the discloser is not the allegedly abused child but another child or an adult.
- 9.8 The Designated Safeguarding Lead must place the concern on the school's safeguarding file for the child (creating one if necessary).
- 9.9 When the Designated Safeguarding Lead, or in his/her absence, the Deputy Designated Safeguarding Lead, has been informed, he/she shall make the decision whether or not to refer the concern to Social Care. On the question of how to decide whether to refer to Social Care, the Coventry Safeguarding Children Board's document 'Children's Social Care Thresholds and Practice Standards' states:

“Professionals in all agencies have a responsibility to refer a child to Children's Social Care when it is believed or suspected that the child:

- **Has suffered significant harm; or**
- **Is likely to suffer significant harm.**

All referrals to Children's Social Care must be made in writing using the Multi-Agency Referral Form or CAF assessment where one has been completed. A history of key events is useful when communicating concerns so that any emerging patterns are recognised.” (Section 8, p.6)

The full Children's Social Care Thresholds and Practice document is available at:

<http://coventryscb.proceduresonline.com/>

The Referral and Assessment Service will be consulted when there is uncertainty about whether to refer.

- 9.10 Referrals must be made as soon as possible and the appropriate forms completed and sent at the same time. Referrals to Children's Social Care must be made to the citywide Referral and Assessment Service at

**Children's Social Care Referral and Assessment Service
4th Floor Broadgate House,
Broadgate,
Coventry,
CV1 1NG.**

Telephone: 024 7678 8555 (the same telephone number as previously)
Complete online referral form for professionals

- 9.11 Additional referral guidance is provided in Appendix 5.

10 Confidentiality

- 10.1 Safeguarding information should be treated as confidential and only shared as part of the agreed school and Coventry Safeguarding Children Board protocols
- 10.2 All staff/volunteers in school have a responsibility to share relevant information about the protection of children with other professionals.
- 10.3 Staff / volunteers who receive information about children and their families in the course of their work shall only share that information only within appropriate contexts.

11 Communication with Parents / Carers

- 11.1 Parents and carers will be made aware of the school/service policy through published information and in initial meetings with parent and carers of new children. Parents and carers will be informed that in certain circumstances there may be a need to contact other agencies without first notifying them. This decision will be made in partnership between Education Services and Social Care Services. It will be made clear that this is a legal obligation and not a personal decision.

12 Recording Keeping

- 12.1 The completed forms/records will be kept for the duration of the child's school career and where a child changes school the forms/records will be copied to the Designated Safeguarding Lead at the receiving school. The school will retain a receipt for the records signed by the receiving school.
- 12.2 The information contained will be regarded as confidential. Any request for access to the information by non-Coventry Safeguarding Children Board Agencies (e.g. Solicitor, investigating agent) will be referred to the Head teacher/Child Protection Designated Senior Person who is advised to seek legal advice before acting.

12.3 All safeguarding concerns are entered onto CPOMS (Child Protection Online Monitoring System) this gives a running record of all concerns and incidents. The SLT and the Pastoral Manager are the only staff who have access to this secure, password and Merilock key protected system.

13 Safer Recruitment

- 13.1 The School will comply with the guidance set out in Part 3 of Keeping Children Safe in Education.
- 13.2 Although not a statutory requirement, at least one member of every appointments panel will have gained accreditation through Safer Recruitment training.

14 Dealing with concerns regarding school staff or volunteers - N.B The school has a specific Whistleblowing policy (approved May 2016) indicating procedure for reporting professional malpractice.

(See Appendix 7 for Professional Abuse Flow Chart)

- 14.1 To reduce the risk of inappropriate or unprofessional behaviour towards children, all staff and volunteers must be aware of safer working practice and must be familiar with the Government document '*Guidance for Safer Working Practice for Adults who work with Children and Young People in Education Settings*' – issued to all staff on 31/10/16
- 14.2 A concern, sometimes referred to as an allegation, is any information which indicates that a member of staff/volunteer may have failed to meet the requirements set out in the staff behaviour (code of conduct) policy, or may have:
- Behaved in a way that has harmed a child, or may have harmed a child;
 - Possibly committed a criminal offence against or related to a child;
 - Behaved towards a child or children in a way that indicates he or she would pose a risk of harm if they work regularly or closely with children⁵.
- 14.3 This applies to any child the member of staff/volunteer has contact with in their personal, professional or community life.
- 14.4 All members of staff/volunteers must report any such concerns to the Designated Safeguarding Lead (or in his/her absence to the Deputy DSL), unless the concern relates to these members of staff (in which case they should report directly to the Chair of Governors – see 14.10 for more info). Failure to report it in accordance with procedures is a potential disciplinary matter.
- 14.5 The person to whom a concern or allegation is reported must take the matter seriously, keep an open mind, and must:
- Find time and, if necessary, a suitable place to listen to the person's concerns or allegations.
 - Listen to what is being said without displaying shock or disbelief.
 - Not make false promises which may not be able to be fulfilled and do not promise confidentiality. If the person asks that information is kept secret, it is important that you tell the person that you cannot promise complete confidentiality.
 - Allow the person to talk freely. Do not cross examine, interview, or probe. Listen, only asking questions when necessary to clarify.
 - Not criticise the alleged perpetrator.
 - Stress that it was the right thing to share the concerns.
 - Explain what has to be done next and who has to be told.

⁵ These 3 points, drawn from *Keeping Children Safe in Education* (DfE 2016), represent the LSCB threshold for position of trust strategy meetings

- Make records that are factual, accurate and relevant and avoid subjective judgements. It is not the school's responsibility to 'check out' what any child tells nor should any abuser be questioned.
 - Sign and date the record of the disclosure.
- 14.6 The member of staff must provide the Designated Safeguarding Lead (or in his/her absence, his/her deputy) with a signed, dated **written** record of their concerns without delay.
- 14.7 The DSL or Deputy DSL receiving the concern/allegation must not unilaterally determine its validity, and must report the concern/allegation to the RAS / MASH team immediately.
- 14.8 The Headteacher will not investigate the concern itself, or take written or detailed statements, but will assess whether the concern meets any of the three criteria set out in **section 14.2** above. If any of the criteria are met then the Headteacher **must contact the DO within one working day**⁶, and provide the DO with **written** confirmation of the concern. The name and contact telephone of the DO are given on the front cover of this policy.
- 14.9 The Headteacher shall, as soon as possible, **following briefing** from the DO inform the subject of the concern.
- 14.10 If concern is raised regarding the Headteacher, then the Chair of Governors will be contacted, whose name and contact telephone number are given on the front cover of this policy.
- In the absence of the Chair of Governors, the Vice Chair will be contacted, whose name and contact telephone are given on the front cover.
- 14.11 In the event concern regarding the Headteacher the Chair of Governors (or the Vice Chair) shall contact the DO (within one working day), whose contact details are given on the front cover of this policy.

15 Special Circumstances

15.1 Children who are looked after

The most common reason for children becoming looked after is as a result of abuse or neglect. The school ensures that staff have the necessary skills and understanding to keep looked after children safe and ensures that appropriate staff have information about a child's looked after status and care arrangements, including the level of authority delegated to the carer by the authority looking after the child. The designated teacher for looked after children and the DSL hold details of the child's social worker and the name and contact details of the Local Authority's virtual head for children who

⁶ Working Together to Safeguard Children (2015)

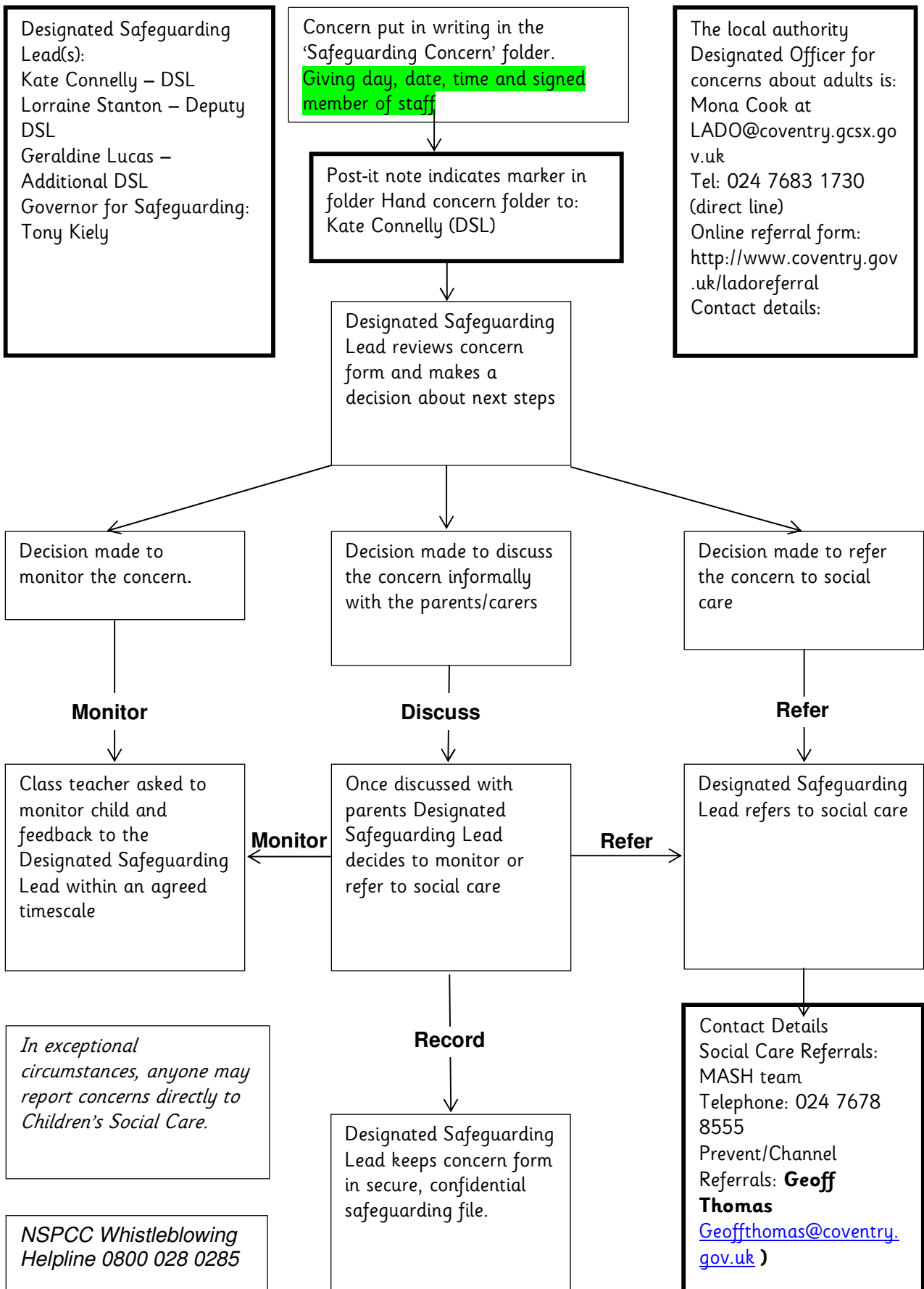
are looked after.

16 Additional school policies to support Safeguarding and Child Protection within Our Lady of the Assumption

- 16.1 Intimate Care Policy
- 16.2 Behaviour Policy
- 16.3 Health and Safety and Security Policy
- 16.4 Anti-Bullying Policy
- 16.5 Peer to peer abuse Policy
- 16.6 Attendance Policy
- 16.7 Staff Model Code of Conduct
- 16.8 Whistleblowing Policy
- 16.9 Safer Recruitment Policy
- 16.10 Sick and Injured Child Policy
- 16.11 Administration of Medicine Policy
- 16.12 SEND Policy
- 16.13 Educational Visits and Trips Policy
- 16.14 Transition Policy

The school has its own flow chart for reporting concerns about a child – please see chart below.

OLA FLOW CHART FOR RAISING SAFEGUARDING CONCERNS ABOUT A CHILD



APPENDIX 1: Part One of *Keeping Children Safe in Education* (DfE 2016)

Part one: Safeguarding information for all staff

What school and college staff should know and do

A child centred and coordinated approach to safeguarding

1. Schools and colleges and their staff form part of the wider safeguarding system for children. This system is described in statutory guidance Working together to safeguard children.
2. Safeguarding and promoting the welfare of children is **everyone's** responsibility. **Everyone** who comes into contact with children and their families and carers has a role to play in safeguarding children. In order to fulfil this responsibility effectively, all professionals should make sure their approach is child-centred. This means that they should consider, at all times, what is in the **best interests** of the child.
3. No single professional can have a full picture of a child's needs and circumstances. If children and families are to receive the right help at the right time, **everyone** who comes into contact with them has a role to play in identifying concerns, sharing information and taking prompt action.
4. Safeguarding and promoting the welfare of children is defined for the purposes of this guidance as: protecting children from maltreatment; preventing impairment of children's health or development; ensuring that children grow up in circumstances consistent with the provision of safe and effective care; and taking action to enable all children to have the best outcomes.
5. Children include everyone under the age of 18.

The role of school and college staff

6. School and college staff are particularly important as they are in a position to identify concerns early, provide help for children, and prevent concerns from escalating.
7. **All** school and college staff have a responsibility to provide a safe environment in which children can learn.
8. Each school and college should have a designated safeguarding lead who will provide support to staff members to carry out their safeguarding duties and who will liaise closely with other services such as children's social care.
9. **All** school and college staff should be prepared to identify children who may benefit from early help.³ Early help means providing support as soon as a problem emerges at any point in a child's life, from the foundation years through to the teenage years. In the first instance staff should discuss early help requirements with the designated safeguarding lead. Staff may be required to support other agencies and professionals in an early help assessment.

³ Detailed information on early help can be found in Chapter 1 of Working together to safeguard children <https://www.gov.uk/government/publications/working-together-to-safeguard-children-2>

10. **Any staff member** who has a concern about a child's welfare should follow the referral processes set out in paragraphs 21-27. Staff may be required to support social workers and other agencies following any referral.

11. The Teachers' Standards 2012 state that teachers, including headteachers, should safeguard children's wellbeing and maintain public trust in the teaching profession as part of their professional duties.⁴

What school and college staff need to know

12. **All** staff members should be aware of systems within their school or college which support safeguarding and these should be explained to them as part of staff induction. This should include:

- the child protection policy;
- the staff behaviour policy (sometimes called a code of conduct); and
- the role of the designated safeguarding lead.

Copies of policies and a copy of Part one of this document (Keeping children safe in education) should be provided to staff at induction.

13. **All** staff members should receive appropriate safeguarding and child protection training which is regularly updated. In addition all staff members should receive safeguarding and child protection updates (for example, via email, e-bulletins and staff meetings), as required, but at least annually, to provide them with relevant skills and knowledge to safeguard children effectively.

14. **All** staff should be aware of the early help process, and understand their role in it. This includes identifying emerging problems, liaising with the designated safeguarding lead, sharing information with other professionals to support early identification and assessment and, in some cases, acting as the lead professional in undertaking an early help assessment.

15. **All** staff should be aware of the process for making referrals to children's social care and for statutory assessments under the Children Act 1989⁵ that may follow a referral, along with the role they might be expected to play in such assessments.⁶

⁴ The Teachers' Standards <https://www.gov.uk/government/publications/teachers-standards> apply to: trainees working towards QTS; all teachers completing their statutory induction period (newly qualified teachers [NQTs]); and teachers in maintained schools, including maintained special schools, who are subject to the Education (School Teachers' Appraisal) (England) Regulations 2012.

⁵ Under the Children Act 1989, local authorities are required to provide services for children in need in their area for the purposes of safeguarding and promoting their welfare. Local authorities undertake assessments of the needs of individual children to determine which services to provide and what action to take. This can include:

Section 17- A child in need is defined under section 17(10) of the Children Act 1989 as a child who is unlikely to achieve or maintain a reasonable level of health or development, or whose health or development is likely to be significantly or further impaired, without the provision of services; or a child who is disabled.

Section 47- If the local authority have reasonable cause to suspect that a child is suffering, or likely to suffer, significant harm they have a duty to make enquires under section 47 to enable them to decide whether they should take any action to safeguard and promote the child's welfare. This duty also applies if a child is subject to an emergency protection order (under section 44 of the Children Act 1989) or in police protective custody under section 46 of the Children Act 1989.

⁶ Detailed information on statutory assessments can be found in Chapter 1 of Working together to safeguard children <https://www.gov.uk/government/publications/working-together-to-safeguard-children-2>

16. **All** staff should know what to do if a child tells them he/she is being abused or neglected. Staff should know how to manage the requirement to maintain an appropriate level of confidentiality whilst at the same time liaising with relevant professionals such as the designated safeguarding lead and children's social care. Staff should never promise a child that they will not tell anyone about an allegation- as this may ultimately not be in the best interests of the child.

What school and college staff should look out for

17. **All** school and college staff members should be aware of the signs of abuse and neglect so that they are able to identify cases of children who may be in need of help or protection. Types of abuse and neglect, and examples of safeguarding issues are described in paragraphs 35-44 of this guidance.

18. Departmental advice: What to do if you are worried a child is being abused- Advice for practitioners provides more information on understanding and identifying abuse and neglect. Examples of potential signs of abuse and neglect are highlighted throughout the advice and will be particularly helpful for school and college staff. The NSPCC website also provides useful additional information on types of abuse and what to look out for.

19. Staff members working with children are advised to maintain an attitude of **'it could happen here'** where safeguarding is concerned. When concerned about the welfare of a child, staff members should always act in the **best** interests of the child.

20. Knowing what to look for is vital to the early identification of abuse and neglect. If staff members are unsure they should always speak to the designated safeguarding lead.

What school and college staff should do if they have concerns about a child?

21. If staff members have any **concerns** about a child (as opposed to a child being in immediate danger - see paragraph 28) they will need to decide what action to take. Where possible, there should be a conversation with the designated safeguarding lead to agree a course of action, although any staff member can make a referral to children's social care. Other options could include referral to specialist services or early help services and should be made in accordance with the referral threshold set by the Local Safeguarding Children Board.

22. If anyone other than the designated safeguarding lead makes the referral they should inform the designated safeguarding lead, as soon as possible. The local authority should make a decision within one working day of a referral being made about what course of action they are taking and should let the referrer know the outcome. Staff should follow up on a referral should that information not be forthcoming. The online tool

Reporting child abuse to your local council <https://www.gov.uk/report-child-abuse-to-local-council> directs you to your local children's social care contact number.

23. See page 10 for a flow chart setting out the process for staff when they have concerns about a child.

24. If after a referral the child's situation does not appear to be improving the designated safeguarding lead (or the person that made the referral) should press for re-consideration to ensure their concerns have been addressed and, most importantly, that the child's situation improves.

25. If early help is appropriate the designated safeguarding lead should support the staff member in liaising with other agencies and setting up an inter-agency assessment as appropriate.

26. If early help and or other support is appropriate the case should be kept under constant review and consideration given to a referral to children's social care if the child's situation doesn't appear to be improving.

27. If a **teacher**⁷, in the course of their work in the profession, discovers that an act of Female Genital Mutilation appears to have been carried out on a girl under the age of 18 the **teacher** must report this to the police. **See Annex A for further details.**

What school and college staff should do if a child is in danger or at risk of harm

28. **If, a child is in immediate danger or is at risk of harm a referral should be made to children’s social care and/or the police immediately.** Anyone can make a referral. Where referrals are not made by the designated safeguarding lead the designated safeguarding lead should be informed, as soon as possible, that a referral has been made. Reporting child abuse to your local council directs you to your local children’s social care contact number.

Record keeping

29. All concerns, discussions and decisions made and the reasons for those decisions should be recorded in **writing**. If in doubt about recording requirements staff should discuss with the designated safeguarding lead.

Why is all of this important?

30. It is important for children to receive the right help at the right time to address risks and prevent issues escalating. Research and Serious Case Reviews have repeatedly shown the dangers of failing to take effective action. Poor practice includes: failing to act on and refer the early signs of abuse and neglect, poor record keeping, failing to listen to the views of the child, failing to re-assess concerns when situations do not improve, sharing information too slowly and a lack of challenge to those who appear not to be taking action.⁸

What school and college staff should do if they have concerns about another staff member?

31. If staff members have concerns about another staff member then this should be referred to the headteacher or principal. Where there are concerns about the headteacher or principal this should be referred to the chair of governors, chair of the management committee or proprietor of an independent school as appropriate. In the event of allegations of abuse being made against the headteacher, **where the headteacher is also the sole proprietor of an independent school, allegations should be reported directly to the Designated Officer(s) at the local authority.** Staff may consider discussing any concerns with the school’s designated safeguarding lead and make any referral via them. Full details can be found in Part four of this guidance.

⁷ Section 5B(11) of the FGM Act 2003 (as inserted by section 74 of the Serious Crime Act 2015) provides the definition for the term ‘teacher’: “teacher” means – (a) in relation to England, a person within section 141A(1) of the Education Act 2002 (persons employed or engaged to carry out teaching work at schools and other institutions in England).

⁸ New learning from serious case reviews: a two year report for 2009-2011 **(We will update with new evidence if it is available before September)**

What school or college staff should do if they have concerns about safeguarding practices within the school or college

32. All staff and volunteers should feel able to raise concerns about poor or unsafe practice and potential failures in the school or college’s safeguarding regime and that such concerns will be taken seriously by the senior leadership team.

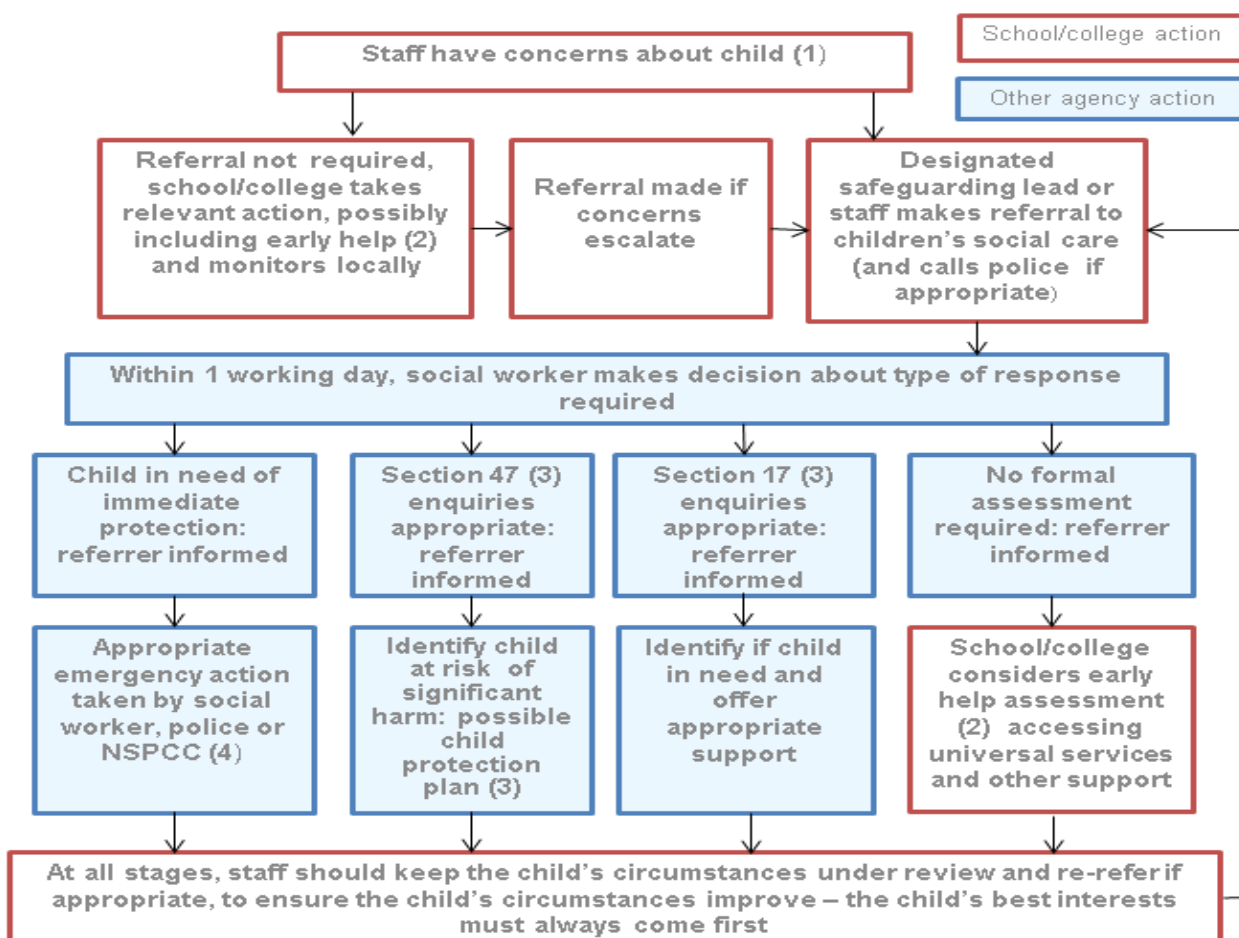
33. Appropriate whistleblowing procedures, which are suitably reflected in staff training and staff behaviour policies, should be in place for such concerns to be raised with the school or college's senior leadership team.

34. Where a staff member feels unable to raise an issue with their employer or feels that their genuine concerns are not being addressed, other whistleblowing channels may be open to them:

- General guidance can be found at- Advice on whistleblowing
- The NSPCC whistleblowing helpline is available for staff who do not feel able to raise concerns regarding child protection failures internally. Staff can call: 0800 028 0285 – line is available from 8:00 AM to 8:00 PM, Monday to Friday and Email: help@nspcc.org.uk ⁹

⁹ Alternatively, staff can write to: National Society for the Prevention of Cruelty to Children (NSPCC), Weston House, 42 Curtain, Road, London EC2A 3NH.

Actions where there are concerns about a child



1. In cases which also involve an allegation of abuse against a staff member, see Part four of this guidance.

2. Early help means providing support as soon as a problem emerges at any point in a child's life. Where a child would benefit from co-ordinated early help, an early help inter-agency assessment should be arranged. Chapter one of Working together to safeguard children <https://www.gov.uk/government/publications/working-together-to-safeguard-children> provides detailed guidance on the early help process.

3. Under the Children Act 1989, local authorities are required to provide services for children in need for the purposes of safeguarding and promoting their welfare. This can include s17 assessments of children in need and s47 assessments of children at risk of significant harm. Full details are in Chapter one of Working together to safeguard children. <https://www.gov.uk/government/publications/working-together-to-safeguard-children>

4. This could include applying for an Emergency Protection Order (EPO).

APPENDIX 2: Role of the Designated Safeguarding Lead

Part two of Keeping Children Safe in Education (DfE 2016) defines the role in the following terms.

‘Governing bodies and proprietors should appoint an appropriate **senior member** of staff, from the school or college **leadership team**, to the role of designated safeguarding lead. The designated safeguarding lead should take **lead responsibility** for safeguarding and child protection. **This should be explicit in the role-holder’s job description** (see Annex B which describes the broad areas of responsibility and activities related to the role).

It is a matter for individual schools and colleges as to whether they choose to have one or more deputy designated safeguarding lead(s). Any deputies should be trained to the same standard as the designated safeguarding lead.

Whilst the activities of the designated safeguarding lead can be delegated to appropriately trained deputies, the **ultimate lead responsibility** for safeguarding and child protection, as set out above, remains with the designated safeguarding lead. **This responsibility should not be delegated.**

The designated safeguarding lead and any deputies should liaise with the local authority and work with other agencies in line with Working together to safeguard children.

During term time the designated safeguarding lead and or a deputy **should always be available (during school or college hours)** for staff in the school or college to discuss any safeguarding concerns. **It is a matter for individual schools and colleges and the designated safeguarding lead to arrange adequate and appropriate cover arrangements for any out of hours/out of term activities.**

The designated safeguarding lead and any deputies should undergo training to provide them with the knowledge and skills required to carry out the role. The training should be updated every two years.

In addition to their formal training, as set out above, their knowledge and skills should be updated, (for example via e-bulletins, meeting other designated safeguarding leads, or taking time to read and digest safeguarding developments), at regular intervals, but at least annually, to keep up with any developments relevant to their role.’

Governing bodies, proprietors and management committees should appoint an appropriate **senior member** of staff, from the school or college **leadership team**, to the role of designated safeguarding lead. The designated safeguarding lead should take **lead responsibility** for safeguarding and child protection. **This should be explicit in the role-holder’s job description. This person should have the appropriate status and authority within the school to carry out the duties of the post. They should be given the time, funding, training, resources and support to provide advice and support to other staff on child welfare and child protection matters, to take part in strategy discussions and inter-agency meetings – and/or to support other staff to do so – and to contribute to the assessment of children.**

Deputy designated safeguarding leads

It is a matter for individual schools and colleges as to whether they choose to have one or more deputy designated safeguarding lead(s). Any deputies should be trained to the same standard as the designated safeguarding lead.

Whilst the activities of the designated safeguarding lead can be delegated to appropriately trained deputies, the ultimate **lead responsibility** for child protection, as set out above, remains with the designated safeguarding lead; this **lead responsibility should not be delegated**.

Manage referrals

The designated safeguarding lead is expected to:

- Refer cases of suspected abuse to the local authority children's social care as required;
- Support staff who make referrals to local authority children's social care;
- Refer cases to the Channel programme where there is a radicalisation concern as required;
- Support staff who make referrals to the Channel programme;
- Refer cases where a person is dismissed or left due to risk/harm to a child to the Disclosure and Barring Service as required; and
- Refer cases where a crime may have been committed to the Police as required.

Work with others

- Liaise with the headteacher or principal to inform him or her of issues especially ongoing enquiries under section 47 of the Children Act 1989 and police investigations;
- As required, liaise with the "case manager" (as per Part four) and the Designated Officer(s) at the local authority for child protection concerns (all cases which concern a staff member); and
- Liaise with staff on matters of safety and safeguarding and when deciding whether to make a referral by liaising with relevant agencies. Act as a source of support, advice and expertise for staff.

Undertake training

The designated safeguarding lead (and any deputies) should undergo training to provide them with the knowledge and skills required to carry out the role. This training should be updated at least every two years.

The designated safeguarding lead **should undertake** Prevent awareness training.

In addition to the formal training set out above, their knowledge and skills should be refreshed (this might be via e-bulletins, meeting other designated safeguarding leads, or simply taking time to read and digest safeguarding developments) at regular intervals, as required, but at least annually, to allow them to understand and keep up with any developments relevant to their role so they:

- Understand the assessment process for providing early help and intervention, for example through locally agreed common and shared assessment processes such as early help assessments;
- Have a working knowledge of how local authorities conduct a child protection case conference and a child protection review conference and be able to attend and contribute to these effectively when required to do so;
- Ensure each member of staff has access to and understands the school's or college's child protection policy and procedures, especially new and part time staff;

- Are alert to the specific needs of children in need, those with special educational needs and young carers;⁸⁰
- Are able to keep detailed, accurate, secure written records of concerns and referrals;
- Understand and support the school or college with regards to the requirements of the Prevent duty and are able to provide advice and support to staff on protecting children from the risk of radicalisation;
- Obtain access to resources and attend any relevant or refresher training courses; and
- Encourage a culture of listening to children and taking account of their wishes and feelings, among all staff, in any measures the school or college may put in place to protect them.

⁸⁰ Section 17(10) Children Act 1989: those unlikely to achieve a reasonable standard of health and development without local authority services, those whose health and development is likely to be significantly impaired without the provision of such services, or disabled children.

Raise Awareness

- The designated safeguarding lead should ensure the school or college's child protection policies are known, understood and used appropriately;
- Ensure the school or college's child protection policy is reviewed annually (as a minimum) and the procedures and implementation are updated and reviewed regularly, and work with governing bodies or proprietors regarding this;
- Ensure the child protection policy is available publicly and parents are aware of the fact that referrals about suspected abuse or neglect may be made and the role of the school or college in this; and
- Link with the local LSCB to make sure staff are aware of training opportunities and the latest local policies on safeguarding.

Child protection file

- **Where children leave the school ensure their child protection file is transferred to the new school or college as soon as possible. This should be transferred separately from the main pupil file, ensuring secure transit. A purple transfer form is completed and a signature is gained from the receiving school and the signed slips are stored in the HT's office**

Availability

- During term time the designated safeguarding lead (or a deputy) **should always be available (during school or college hours)** for staff in the school or college to discuss any safeguarding concerns. Whilst generally speaking the designated safeguarding lead (or deputy) would be expected to be available in person, it is a matter for individual schools and colleges, working with the designated safeguarding lead, to define what **"available"** means and whether in exceptional circumstances availability via phone and or Skype or other such mediums is acceptable.
- It is a matter for individual schools and colleges and the designated safeguarding lead to arrange adequate and appropriate cover arrangements for any out of hours/out of term activities.

Appendix 3 - Types of abuse and neglect

35. **All school and college staff should be aware that abuse, neglect and safeguarding issues are rarely standalone events that can be covered by one definition or label. In most cases multiple issues will overlap with one another.**

36. **Abuse:** a form of maltreatment of a child. Somebody may abuse or neglect a child by inflicting harm or by failing to act to prevent harm. Children may be abused in a family or in an institutional or community setting by those known to them or, more rarely, by others (e.g. via the internet). They may be abused by an adult or adults or another child or children.

37. **Physical abuse:** a form of abuse which may involve hitting, shaking, throwing, poisoning, burning or scalding, drowning, suffocating or otherwise causing physical harm to a child. Physical harm may also be caused when a parent or carer fabricates the symptoms of, or deliberately induces, illness in a child.

38. **Emotional abuse:** the persistent emotional maltreatment of a child such as to cause severe and adverse effects on the child's emotional development. It may involve conveying to a child that they are worthless or unloved, inadequate, or valued only insofar as they meet the needs of another person. It may include not giving the child opportunities to express their views, deliberately silencing them or 'making fun' of what they say or how they communicate. It may feature age or developmentally inappropriate expectations being imposed on children. These may include interactions that are beyond a child's developmental capability as well as overprotection and limitation of exploration and learning, or preventing the child participating in normal social interaction. It may involve seeing or hearing the ill-treatment of another. It may involve serious bullying (including cyberbullying), causing children frequently to feel frightened or in danger, or the exploitation or corruption of children. Some level of emotional abuse is involved in all types of maltreatment of a child, although it may occur alone.

39. **Sexual abuse:** involves forcing or enticing a child or young person to take part in sexual activities, not necessarily involving a high level of violence, whether or not the child is aware of what is happening. The activities may involve physical contact, including assault by penetration (for example rape or oral sex) or non-penetrative acts such as masturbation, kissing, rubbing and touching outside of clothing. They may also include non-contact activities, such as involving children in looking at, or in the production of, sexual images, watching sexual activities, encouraging children to behave in sexually inappropriate ways, or grooming a child in preparation for abuse (including via the internet). Sexual abuse is not solely perpetrated by adult males. Women can also commit acts of sexual abuse, as can other children.

40. **Neglect:** the persistent failure to meet a child's basic physical and/or psychological needs, likely to result in the serious impairment of the child's health or development. Neglect may occur during pregnancy as a result of maternal substance abuse. Once a child is born, neglect may involve a parent or carer failing to: provide adequate food, clothing and shelter (including exclusion from home or abandonment); protect a child from physical and emotional harm or danger; ensure adequate supervision (including the use of inadequate care-givers); or ensure access to appropriate medical care or treatment. It may also include neglect of, or unresponsiveness to, a child's basic emotional needs.

Specific safeguarding issues

41. **All** staff should have an awareness of safeguarding issues- some of which are listed below. Staff should be aware that behaviours linked to the likes of drug taking, alcohol abuse, truanting and sexting put children in danger.

42. **All** staff should be aware safeguarding issues can manifest themselves via peer on peer abuse. This is most likely to include, but not limited to: bullying (including cyber bullying), gender based violence/sexual assaults and sexting. Staff should be clear as to the school or college's policy and procedures with regards to peer on peer abuse.

43. Expert and professional organisations are best placed to provide up-to-date guidance and practical support on specific safeguarding issues. For example information for schools and colleges can be found on the TES, <https://www.tes.com/teaching-resources> MindEd <https://www.minded.org.uk/course/view.php?id=402> and the NSPCC <https://www.nspcc.org.uk/preventing-abuse/child-abuse-and-neglect/> websites. School and college staff can access government guidance as required on the issues listed below via GOV.UK and other government websites:

- bullying including cyberbullying <https://www.gov.uk/government/publications/preventing-and-tackling-bullying>
- children missing education – and Annex A <https://www.gov.uk/government/publications/children-missing-education>
- child missing from home or care <https://www.gov.uk/government/publications/children-who-run-away-or-go-missing-from-home-or-care>
- child sexual exploitation (CSE) – and Annex A <https://www.gov.uk/government/publications/what-to-do-if-you-suspect-a-child-is-being-sexually-exploited>
- domestic violence <https://www.gov.uk/guidance/domestic-violence-and-abuse>
- drugs <https://www.gov.uk/government/publications/drugs-advice-for-schools>
- fabricated or induced illness <https://www.gov.uk/government/publications/safeguarding-children-in-whom-illness-is-fabricated-or-induced>
- faith abuse <https://www.gov.uk/government/publications/national-action-plan-to-tackle-child-abuse-linked-to-faith-or-belief>
- female genital mutilation (FGM) – and Annex A <https://www.gov.uk/government/publications/multi-agency-statutory-guidance-on-female-genital-mutilation>
- forced marriage- and Annex A <https://www.gov.uk/guidance/forced-marriage>
- gangs and youth violence <https://www.gov.uk/government/publications/advice-to-schools-and-colleges-on-gangs-and-youth-violence>
- gender-based violence/violence against women and girls (VAWG) <https://www.gov.uk/government/policies/violence-against-women-and-girls>

- □hate <http://educateagainsthate.com/>
- mental health <https://www.gov.uk/government/publications/mental-health-and-behaviour-in-schools-2>
- missing children and adults strategy <https://www.gov.uk/government/publications/missing-children-and-adults-strategy>
- private fostering <https://www.gov.uk/government/publications/children-act-1989-private-fostering>
- preventing radicalisation – and Annex A <https://www.gov.uk/government/publications/prevent-duty-guidance>
- relationship abuse <https://www.disrespectnobody.co.uk/relationship-abuse/what-is-relationship-abuse/>
- sexting <https://www.disrespectnobody.co.uk/sexting/what-is-sexting/>
 - trafficking <https://www.gov.uk/government/publications/safeguarding-children-who-may-have-been-trafficked-practice-guidance>

44. Annex A contains important additional information about specific forms of abuse and safeguarding issues. School leaders and those staff that work directly with children should read the Annex.

- (make sure all staff read part one AND Annex A and Annex B)

APPENDIX 4: Indicators of Abuse

NB. This guidance is provided as a useful reminder of the indicators of abuse but should be always be considered within the context of a comprehensive training programme and not as a substitute for more in depth consideration

There are four categories of abuse, which may result in a child being placed on the Child Protection Register. They are:

- Physical Abuse
- Emotional Abuse
- Sexual Abuse
- Neglect

Indicators of Physical Abuse

Some of these indicators would clearly suggest child abuse, whilst others, when combined, may suggest that a child is being abused:

- Unexplained injuries including burns, particularly if they are recurrent
- Improbably excuses given to explain injuries
- Refusal to discuss injuries
- Untreated injuries
- Admission of punishment which seems excessive
- Bald patches
- Withdrawal from physical contact
- Arms and legs covered, even in hot weather
- Fear of returning home
- Fear of medical help
- Self-destructive tendencies
- Aggression towards others
- Running away

Indicators of Emotional Abuse

Some of these indicators would clearly suggest child abuse, whilst others, when combined, may suggest that a child is being abused:

- Physical and/or mental and/or emotional development lags
- Admission of punishment that appears excessive
- Over-reaction to mistakes
- Continual self-deprecation
- Sudden speech disorders
- Fear of new situations
- Inappropriate emotional responses to painful situations
- Neurotic behaviour eg. thumb sucking, hair twisting, rocking
- Self-mutilation
- Fear of parents being contacted

- Extremes of passivity or aggression
- Drug/solvent abuse
- Running away
- Compulsive stealing or scavenging.

Indicators of Sexual Abuse

Some of these indicators would clearly suggest child abuse, whilst others, when combined, may suggest that a child is being abused:

- Sudden changes in behaviour or in school performance
- Displays of affection in a sexual way, inappropriate to age
- Tendency to cling or need reassurance
- Regression to younger behaviour eg. thumb sucking, acting like a baby, playing with discarded toys
- Complaints of genital itching or pain, or anal pain
- Distrust of a familiar adult, or anxiety about being left with a relative, babysitter or lodger
- Unexplained gifts or money
- Depression and withdrawal
- Apparent secrecy
- Bedwetting, daytime wetting and/or soiling
- Sleep disturbances, nightmares
- Chronic illness, eg. throat infection, venereal disease or other STD
- Anorexia, bulimia
- Unexplained pregnancy
- Fear of undressing, eg. for sport
- Phobias or panic attacks

Indicators of Neglect

Some of these indicators would clearly suggest child abuse, whilst others, when combined, may suggest that a child is being abused.

- Constant hunger
- Poor personal hygiene
- Constant tiredness
- Poor state of clothing
- Emaciation
- Frequent lateness or non-attendance at school
- Untreated medical problems
- Destructive tendencies
- Low self esteem
- Neurotic behaviour
- No social relationships
- Running away
- Compulsive stealing or scavenging.

APPENDIX 5: REFERRAL GUIDANCE

REASONS WHY SOME PEOPLE HESITATE TO REPORT ABUSE

The following list contains a range of reasons why people commonly hesitate to report abuse. It is provided for information, but be aware that none of these reasons is a justification for failing to report a child protection concern or disclosure.

- The child asks you to keep silent – keep a secret
- Fear of breaking up the family
- Fear of exposing the child to further abuse
- Fear of breaking a trusting relationship with child/family
- Painful memories of your own abusive experiences
- Fear of reprisals to yourself/your children/family
- Fear of presenting evidence in court
- Afraid of misinterpreting or overreacting to the situation
- Assuming another agency is dealing with the problem
- The 'rule of optimism' – everything will work out OK
- Assuming one parent/carer will protect
- Believing the child is fantasising/lying
- Being persuaded by the child's retraction
- Allowing a temporary improvement in the child's situation to distract you from the reality of continuing abuse
- Being unable to comprehend the unbelievable nature of the disclosure
- Not understanding procedures

WHY CHILDREN CAN'T TELL ABOUT ABUSE

- Threats from abuse – withdrawal of 'favours' or physical threats – may be implicit derived from abuse of power
- Threats from peers also involved in abuse
- May think s/he is to blame and fear arrest
- Fear the loss of the child's world – family, school etc.
- May be emotionally dependent on abuser
- May have compartmentalised abuse
- Thinks won't be believed
- Low sense of self-esteem makes disclosure difficult
- May not realise sexual abuse is a crime – thinks its normal
- May not wish to betray abuser
- May fear exposure and particularly public exposure
- May be ambivalent about sexual identity or feel guilt about taking part in abuse
- Lack of faith in justice system particularly for children with disabilities and from ethnic minorities
- Hasn't got adult permission to tell
- Lack of appropriate language skills

WHY REFER?

- Children have the right to be safe

- Adults have a responsibility to protect children
- Abuse is damaging
- Child abuse exists in a world of secrecy and silence – the cycle of abuse has to be broken
- You only have one small piece of a jigsaw
- Children rarely lie about abuse
- An abuser may well abuse many other children who also have a right to protection

For guidance and support, contact the Children's Social Care Referral and Assessment Service Telephone: 024 7678 8555.

MAKING A DECISION

Further guidance on making a decision is provided in the Children's Social Care, Thresholds and Practice Standards, available at:

<http://coventryscb.proceduresonline.com/>

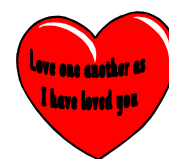
APPENDIX 6 - Proforma for Report form Child Protection Conference (one form per child)

To be used when writing a report for a CP conference.

Full Name of Pupil: Gender:	DOB: Ethnicity:	Class/Form:	Additional needs:
Home Address:		Telephone: E mail:	
	What are you worried about?	What is working well?	What needs to happen?
Presentation of Child (appropriate uniform/shoes/cleanliness/hair/general health)			
Eating (appetite, FSM, breakfast club, toileting, etc.)			
Education/Attainment			
Attendance			
Child's Voice			
Child interaction in school			
Parent/Carer interaction with school			
Child/Parent-Carer interaction			
Parent engagement (bringing/collecting from school/attending meetings, parents evenings, etc.)			
Peer Relationships			
SEND			
Any additional concerns/changes in behaviour? Any patterns of the day/time/month?			



Our Lady of the Assumption Catholic Primary School
School security arrangements for September 2016



Morning

Vehicular access gates are open between 7.15am and 7.45am - if staff wish to gain access or exit outside these times they need to unlock and re-lock the gates themselves.

Steve completes site check at 7.45am to make sure all external green doors are closed and only accessible by job. Staff entering school site via the church car park will need their gate key to unlock and re-lock the gate as they enter.

All classteachers need to be on their respective playgrounds at 8.40am please.

8.40am - EYFS/KS1 Staff will open the wooden gate at the top of ramp to let parents onto the KS1 playground. Staff will position themselves by the metal pedestrian entrance gate to check on those entering the school site. Steve opens wooden gate outside the staffroom. KS2 staff unlock pedestrian entrance by the church car park to let parents onto KS2 playground and stand on these gates until 8.55am

N.B The gates around the back of the church/ gym will no longer be open for access.

8.50am – Staff lock the wooden gate at top of the KS1 ramp. All parents need to have left the playground at this time.

8.55am - Mr Morris locks the wooden gate by office. KS2 staff lock KS2 pedestrian / church car park entrance. At this point the school site is fully secure for rest of day.

Afternoon

3.05pm – Steve unlocks KS1 wooden gate to allow parents onto the KS1 playground.

3.10pm – Steve unlocks the wooden gate by office and the KS2 pedestrian gate.

3.25pm – All gates locked except for the normal Hawthorn Lane pedestrian entrance

Service gates will remain locked until 5.30pm when children are no longer on site.

Parents are not allowed in the school building before or after school – if they need to use the toilet they come through the office and will accompanied to the toilet by a member of staff.

Wraparound Club

Entrance / exit is **only** through the main office doors. Parents use the Hawthorn Lane gate. A wireless bell is installed with 2 x receivers – one portable if staff and children are outside and one plugged in to base (either hall or Phiz lab)

Staff wear ID badges at all times – these are on lanyards and have job attached too.

Delivery drivers given gate key with extra large key ring and verbally told to unlock , drive-in and unlock the gate.

Visitors / Strangers – All visitors have to wear either a green (DBS cleared) or red (non DBS cleared) lanyards - it is very important that **you** challenge any adults you see on site who

you do not recognise. Say ' Excuse me, can I help you? ' If not authorised to be on site then **you** escort them off school site and let Kate know. Please be vigilant and close all external green doors behind you.

Mobile phones. - Staff phones - All staff must switch off their mobile phones when in school. All phones to be kept in handbags / locked drawers and not used during work time. Calls and text messages can be made at lunchtime. If there are exceptional circumstances where staff need to access a phone then permission is given by Kate. Steve and Kate have mobiles to hand for emergencies.

Visitor phones - All visitors must switch their mobile phone off when coming onto school site and not make or receive calls. If calls are needed then the visitor must come back through the main entrance and make / receive the call outside the school office.

APPENDIX 8 – Professional Abuse Flow Chart

An allegation may relate to a person who works with children who has:

- behaved in a way that has harmed a child, or may have harmed a child;
- Possibly committed a criminal offence against or related to a child; or
- behaved towards a child or children in a way that indicates they may pose a risk of harm to children.

Working Together to Safeguard Children 2015

It is your duty to report concerns to the DSL. If you feel that your concern has not been dealt with appropriately you have a duty to report your concern directly.

If an allegation is made against any adult who comes into contact with children in either a paid or unpaid capacity in the setting, the child minder or any person in the child minder setting

**Childcare provider contacts the
1. LADO 024 76833443
2. Ofsted 0300 123 1231**

LADO to be consulted on initial planning and whether the member of staff/person concerned is to be informed of the allegation; the LADO will ask you to complete a referral form to be returned to the secure GSCX email address LADO@coventry.gcsx.gov.uk . If there is an offence or on-going risk to the child you must make a referral to Social Care 024 76788555 or contact the Emergency Duty Team - Out of Hours 76832222 and or the Police)

Position of Trust (PoT) meeting may be convened to consider allegation and plan any further enquiries/investigation – this is a multi-agency meeting which may include the Police and Ofsted and is chaired by the LADO to exchange information and to decide on formal investigation processes. There are occasions when investigations are in process before a PoT is convened these are usually when the allegation has been made directly to the Police

REMEMBER!
Is the child safe?
Document everything
Do not investigate

Allegation is unfounded setting/CQRA to support member of staff/child minder returning to work

Allegation is founded, disciplinary procedures apply and any potential criminal proceedings.

Manager/Senior Officer to make a referral to DBS. In the event of Child minder settings Ofsted will withdraw registration and will liaise on the referral to the DBS -